

KIRLOSKAR PUMPS

ANISA

0.5 & 1.0 HP MINI SERIES PUMPS

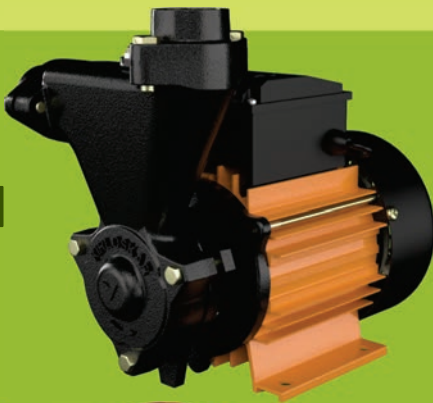


Enriching Lives

ANISA II



ANISA I



FEATURES



CED Coating

Superior resistance against corrosion



Wide Voltage Range

Protection against voltage variation from 160 to 260 volts



Dynamically Balanced Rotating Parts

Minimum vibrations protect components from damages during the operations



Enhanced Safety Features

Covered electrical parts offer additional safety



Domestic water supply



Lawn sprinklers



Gardens & fountains



Feed water to RO plants



Car washing



Construction sites

BUY ELECTRIC PUMPS WITH PURE COPPER WINDING WIRES ONLY. ENQUIRE BEFORE BUYING.



ALWAYS BUY PUMPS WITH



Enriching Lives

and



LOGOS ON PACKAGING

KIRLOSKAR BROTHERS LIMITED

Established 1888

A Kirloskar Group Company



We are now on WhatsApp to assist you better

9922710710

Toll Free Number: 1800 123 4443

www.kirloskarpumps.com

ANISA

0.5 HP & 1.0 HP MINI SERIES PUMPS

Applications

- Water supply to overhead tanks in houses
- Domestic Water Supply
- Feed water to RO Plants
- Construction sites
- Gardens and fountains
- Car Washing
- Lawn sprinklers

Features

- High Efficiency and Energy Saving Design:**
Innovative design manufactured at state of art plant, delivers optimum efficiency at lower energy consumption resulting in significant cost savings.
- Cathodic Electro Deposition (CED) Coating:**
CED is the latest coating technology for corrosion resistance with uniform coating, provides 5 times more protection over conventional painting, resulting in longer life. Hydraulic parts of Kirloskar pumps are CED coated.
- Wide Voltage Range:**
The motor is designed to withstand wide voltage variation from 160 to 260 volts and reduces chances of motor burning due to low/high voltage.
- Shielded Ball Bearing:**
The pumps are fitted with shielded ball bearings, which results in low noise level and so no external lubrication is required throughout the life cycle.
- Dynamically Balanced Rotating Parts:**
Minimum vibrations protect components from damages during the operations, consistent performance as concentricity is maintained.
- Easy Maintainable Designs:**
Easy maintainable design and better interchangeability of components so that pump can be serviced even at remote locations by semi-skilled technicians.
- High Suction Lift:**
The pump has suction lift capacity up to 7.5 meters with high head, allowing to pump water at high volumes for a variety of applications.
- Enhanced Safety Features:**
All electrical parts of the pump are covered, which makes it safer to use
- Light weight and Compact Design:**
It allows user to carry the pump anywhere with ease, adding to its portability and convenience of use.

Technical Specifications

Head Range	Up to 24 meters
Discharge Range	Up to 2600 LPH
Power Rating	0.37 to 0.75 kW (0.5 to 1.0HP)
Phase	Single
Voltage Range	160 - 260 Volts
Insulation	'B' Class

Material of Construction

Impeller	Brass
Delivery Casing	Cast Iron
Motor Body	Aluminum
Shaft	Carbon Steel
Mechanical Seal	Carbon Vs. Ceramic

PERFORMANCE CHART FOR ANISA - II & ANISA - I MINI PUMPS, AT RATED VOLTAGE, 50 Hz FREQUENCY, SINGLE PHASE A.C. POWER SUPPLY

S. No.	Pump Model	Power Rating		Pipe Size (mm)		Rated Voltage (Volts)	TOTAL HEAD IN METERS					
		kW	HP	SUC.	DEL		6	10	14	18	21	24
							DISCHARGE IN LPH					
1	ANISA - II	0.37	0.5	25	25	240	2000	1600	1300	900	500	-
2	ANISA - I	0.75	1.0	25	25	240	2600	2230	1870	1360	1050	700

Note: Performance under standard test conditions and may vary on site conditions. Performance applicable to liquid of specific gravity 1 and viscosity as of water.

KIRLOSKAR BROTHERS LIMITED

Established 1888

A Kirloskar Group Company

Registered Office & Global Headquarters: "Yamuna", Survey No. 98/(3 to7), Plot No. 3, Baner, Pune - 411 045, Maharashtra, India Tel: +91 (20)27214444,

Email: marketing@kbl.co.in, Website: www.kirloskarpumps.com

CIN No.: L29113PN1920PLC000670



FOR SERVICE OF PUMPS

We are now on WhatsApp to assist you better
9922710710

(OR) Call on Toll Free Number:

1800 123 4443