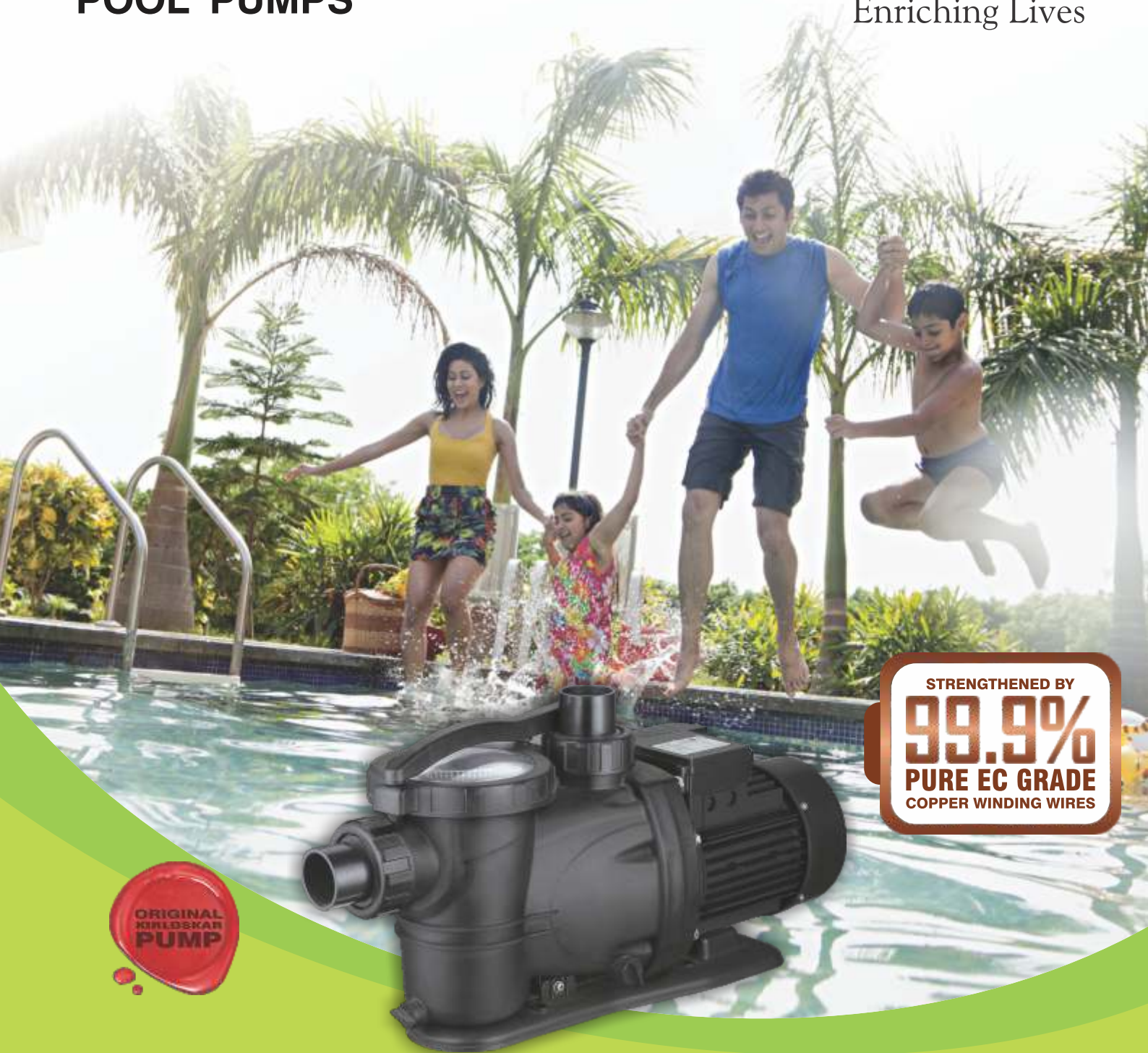


KPP

KIRLOSKAR SWIMMING POOL PUMPS



Enriching Lives



STRENGTHENED BY
99.9%
PURE EC GRADE
COPPER WINDING WIRES



SPLASHES OF HAPPINESS, UNINTERRUPTED

BUY ELECTRIC PUMPS WITH PURE COPPER WINDING WIRES ONLY. ENQUIRE BEFORE BUYING.

ALWAYS BUY PUMPS WITH



Enriching Lives

and



LOGOS ON PACKAGING

KIRLOSKAR PUMPS

TECHNICAL SPECIFICATION

Head Range	- Up to 17.9 Metres
Discharge Range	- Up to 500 LPM
Motor Rating	- 0.55 to 2.2 kW (0.75 to 3.0 HP)
Voltage Range	- 240 Volts \pm 10%
Motor Insulation	- F Class
Maximum Suction Lift	- Up to 3.5 M

MATERIAL OF CONSTRUCTION

Pump Body	- Glass filled polypropylene
Pump Shaft	- Stainless steel
Impeller	- Poly Phenylene oxide
Diffuser	- Glass filled polypropylene
Mechanical Seal	- Carbon Vs Ceramic
Motor Body	- Aluminium

APPLICATIONS

Water circulation and filtration systems such as in

- Hot Springs
- Swimming pools including Suction Sweeping
- Spa
- Water treatment systems
- Landscape Fountains

FEATURES

Thermal Overload Protection

Built in Thermal Overload Protection for Motor

Pre Filter Basket

Built in pre filter basket for easy cleaning of swimming pool water and to separate hair and lint. Large wrench on lid for easy removal for cleaning and positive sealing

Quiet Operation

Self Priming

No Need to Prime. Can start delivering instantaneously.

Lightweight and Compact design

Constructed with special grade engineering materials such as Glass Filled Polypropylene for strength, compact designs for ease of handling and installation.

Mechanical Seal

True Carbon face seal for reliability and trouble free operation. Easy to replace and maintain.

Dynamically Balanced Rotating Parts

Minimum vibration protect components from damage during the operation, thus ensuring consistent performance as concentricity is maintained.

PERFORMANCE CHART OF 'KPP SERIES'-2 POLE PUMPS, AT RATED VOLTAGE, 50HZ FREQUENCY, SINGLE PHASE A.C. POWER SUPPLY

Sr. No.	Pump Model	Power Rating		Pipe Size (mm)		Rated Voltage (Volts)	DISCHARGE										
							m³/h	3	6	9	12	15	18	21	24	27	30
		kW	HP	Suc	Del		l/min	50	100	150	200	250	300	350	400	450	500
1	KPP - 550	0.55	0.75	50	50	220	HEAD (m)	9.7	9.0	8.0	6.0	3.2	0.5	-	-	-	-
2	KPP - 800	0.75	1.0	50	50	220		10.8	10.3	9.2	7.0	4.5	1.5	-	-	-	-
3	KPP - 1100	1.10	1.5	50	50	220		14.8	14.2	13.2	12.0	10.3	8.0	4.8	-	-	-
4	KPP - 1600	1.50	2.0	50	50	220		16.8	16.3	15.5	14.5	13.5	12.0	9.6	7.0	3.5	-
5	KPP - 2200	2.20	3.0	50	50	220		17.9	17.5	16.7	15.9	14.7	13.4	11.6	9.5	7.0	3.5

Note:

- Performance under standard test conditions and may vary on site conditions.
- Performance applicable to liquid of specific gravity 1 and viscosity as of water.

KIRLOSKAR BROTHERS LIMITED

Established 1888

A Kirloskar Group Company

Registered Office & Global Headquarters: "Yamuna", Survey No. 98/(3 to7), Plot No. 3, Baner, Pune - 411 045, Maharashtra, India **Tel:** +91(20)27214444, **Email:** marketing@kbl.co.in, **Website:** www.kirloskarpumps.com
CIN No.: L29113PN1920PLC000670



FOR SERVICE OF PUMPS



We are now on WhatsApp to assist you better

9922710710

(OR) Call on Toll Free Number:

1800 123 4443