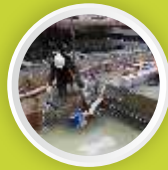




Enriching Lives

# ETERNA CW

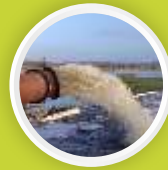
## SEWAGE DE-WATERING SUBMERSIBLE PUMPS



Dewatering Foundation, Trenches and Pits



Construction Site



Sewage Pumping



Flood Water Handling



ETERNA CW+

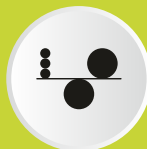


ETERNA CW

STRENGTHENED BY  
**99.9%**  
PURE EC GRADE  
COPPER WINDING WIRES



Easy Maintainable Design



Dynamically Balanced Rotating Parts



Replaceable Wearing Parts



High Efficiency & Energy Saving Design

BUY ELECTRIC PUMPS WITH PURE COPPER WINDING WIRES ONLY. ENQUIRE BEFORE BUYING.

# ALWAYS BUY PUMPS WITH



Enriching Lives

and



# LOGOS ON PACKAGING

# ETERNA CW

## SEWAGE DE-WATERING SUBMERSIBLE PUMPS

### FEATURES

#### High Efficiency and Energy Saving Design

Innovative design manufactured at state of art plant, delivers optimum efficiency at lower energy consumption resulting in significant cost savings.

#### Easy Maintainable Designs

Easy maintainable design and better interchangeability of components so that pump can be serviced even at remote locations by semi-skilled technicians.

#### Robust Construction

Heavy duty construction made from graded cast iron, carbon + silicon carbide mechanical seal makes the pump suitable for sewage and sludge.

#### Replaceable Wearing Parts

All wearing parts within the pumps are easily accessible and replaceable which facilitates ease of maintenance thereby extending the life of the pump.

#### Dynamically Balanced Rotating Parts

Minimum vibration protect components from damage during the operation, thus ensuring consistent performance as concentricity is maintained.

### TECHNICAL SPECIFICATION

Head Range	- Up to 70 Metres
Discharge Range	- Up to 4920 LPM
Power Rating	- 0.37 to 15 kW (0.5 to 20 HP)
Voltage Range	- 300 to 440 Volts - 3 Ph (For CW+ Models) - 380 to 440 Volts - 3 Ph (For CW Models)
pH Value	- 6.5 to 7.5
Maximum Density	- < 1050 kg/m <sup>3</sup>
Protection	- IP68
Consistency of Medium	- < 1.2 x 10 <sup>3</sup> kg/m <sup>3</sup>
Maximum Ambient Temperature	- 40 °C
Insulation	- B/ E Class

### MATERIAL OF CONSTRUCTION

Impeller	- Cast Iron
Delivery Casing	- Cast Iron
Motor Body	- Cast Iron
Pump Shaft	- Carbon Steel - CW / Stainless Steel - CW+

### APPLICATIONS

- Sewage pumping
- Dewatering from basements, multi-storeys, shopping malls, godowns
- Construction site
- Dewatering foundation, trenches and pits
- Flood water handling

PERFORMANCE CHART FOR ETERNA CW+ / CW SERIES, SEWAGE DE-WATERING PUMPS, AT RATED VOLTAGE, 50 Hz FREQUENCY, THREE PHASE A.C. POWER SUPPLY

S. No.	PUMP MODEL	Power Rating		Pipe Size DEL. (mm)	Rated Voltage (Volts)	Rated Speed (RPM)	Max. Solid Size (mm)	TOTAL HEAD IN METERS										Minimum Submerged From Bottom (mm)		
		kW	HP					4	6	8	10	12	14	16	18	19	22		24	
								DISCHARGE IN LITRES PER MINUTE												
1	ETERNA 370 CW+	0.37	0.5	50	415	2800	18	171	144	114	66	-	-	-	-	-	-	-	-	410
2	ETERNA 750 CW+	0.75	1	50	415	2800	22	-	312	264	204	120	-	-	-	-	-	-	-	450
3	ETERNA 1100 CW+	1.1	1.5	50	415	2800	24	-	366	312	252	180	84	-	-	-	-	-	-	460
4	ETERNA 1500 CW+	1.5	2	50	415	2840	22	-	-	396	357	312	270	222	144	96	-	-	-	490
5	ETERNA 2200 CW+	2.2	3	50	415	2840	25	-	-	-	-	-	450	408	348	312	180	-	-	500
6	ETERNA 3700 CW+	3.7	5	65	415	2900	35	-	-	-	-	-	960	870	720	600	360	150	-	625
7	ETERNA 5500 CW+	5.5	7.5	80	415	2900	35	-	1560	1500	1410	1272	1140	990	810	750	450	180	-	660
8	ETERNA 7500 CW+ 4P	7.5	10	150	415	1440	60	3950	3690	3360	3000	2460	1500	840	240	-	-	-	-	820
								4	6	8	10	12	14	16	18	20	22	24	-	
9	ETERNA 11000 CW 4PL	11	15	150	380	1440	45	-	-	4920	4200	3600	2700	1600	280	-	-	-	-	970
10	ETERNA 15000 CW 4PL	15	20	150	380	1440	45	-	4800	4520	4230	3950	3620	3120	2140	400	-	-	-	1020
								12	15	18	21	24	27	30	33	36	39	41	-	
11	ETERNA 7500 CW+ 2P	7.5	10	65	380	2900	25	1080	1074	1056	1020	960	882	810	690	540	375	240	-	695
12	ETERNA 11000 CW 4P	11	15	100	380	1440	35	-	2680	2350	1970	1500	630	-	-	-	-	-	-	925
13	ETERNA 15000 CW 4P	15	20	100	380	1440	35	-	-	2950	2680	2380	2080	1650	1150	680	150	-	-	990
								25	30	35	40	45	50	55	60	65	70	75	-	
14	ETERNA 11000 CW 2P	11	15	65	380	2900	25	1060	980	850	650	400	185	-	-	-	-	-	-	920
15	ETERNA 15000 CW 2P	15	20	65	380	2900	25	-	-	-	-	-	1290	950	600	230	40	-	-	935

#### Note:

- Performance under standard test conditions and may vary on site conditions.
- Performance applicable to liquid of specific gravity 1 and viscosity as of water.

### KIRLOSKAR BROTHERS LIMITED

Established 1888

A Kirloskar Group Company

**Registered Office & Global Headquarters:** "Yamuna", Survey No. 98/(3 to7), Plot No. 3, Baner, Pune - 411 045, Maharashtra, India **Tel:** +91(20)27214444, **Email:** marketing@kbl.co.in, **Website:** www.kirloskarpumps.com **CIN No.:** L29113PN1920PLC000670

### FOR SERVICE OF PUMPS



We are now on WhatsApp to assist you better

**9922710710**

(OR) Call on Toll Free Number:

**1800 123 4443**