



Enriching Lives



KIRLOSKAR BROTHERS LIMITED

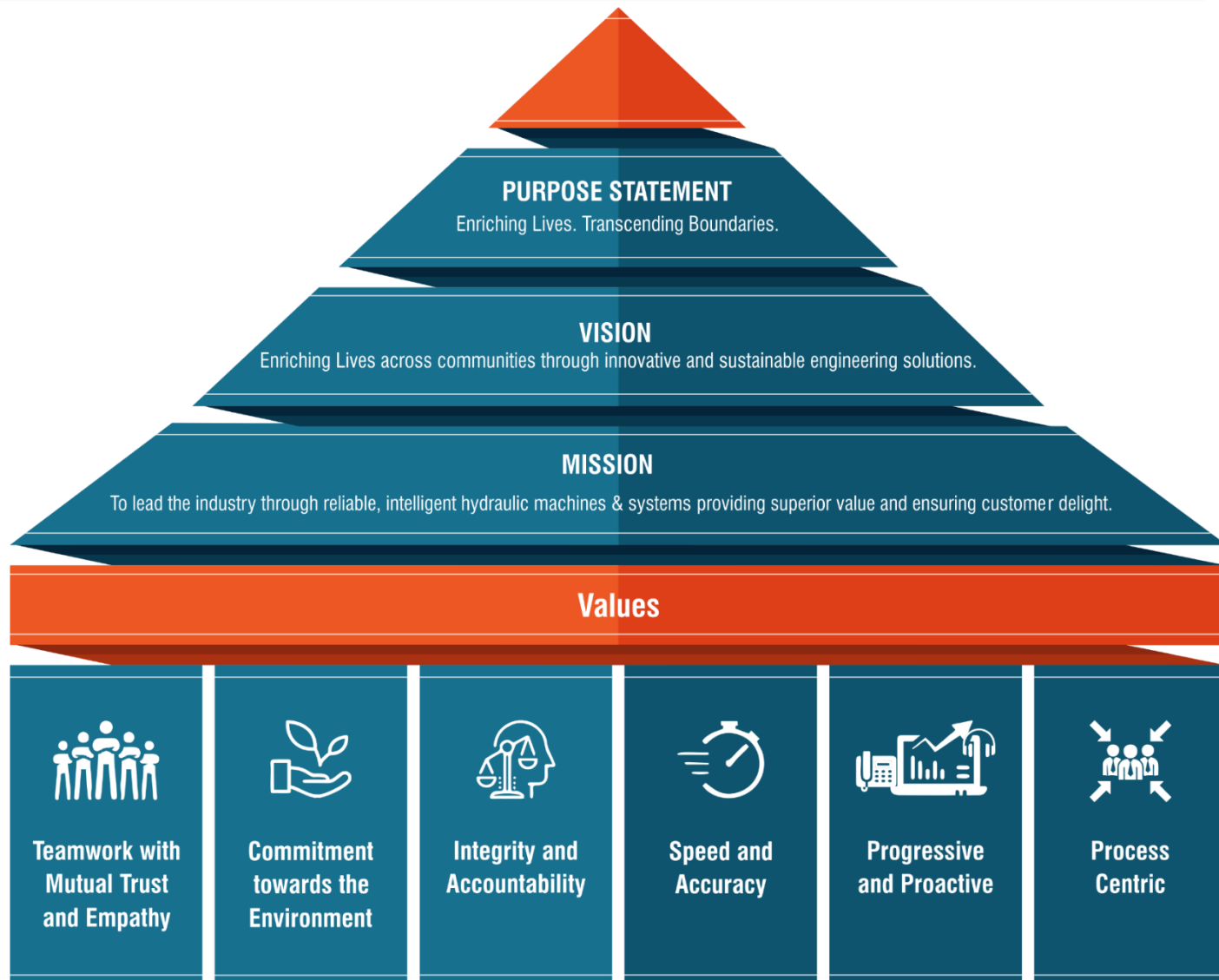
Established 1888

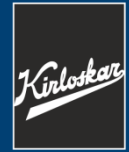
A Kirloskar Group Company

Our Purpose, Vision, Mission & Values



Enriching Lives







Enriching Lives

KBL at a Glance

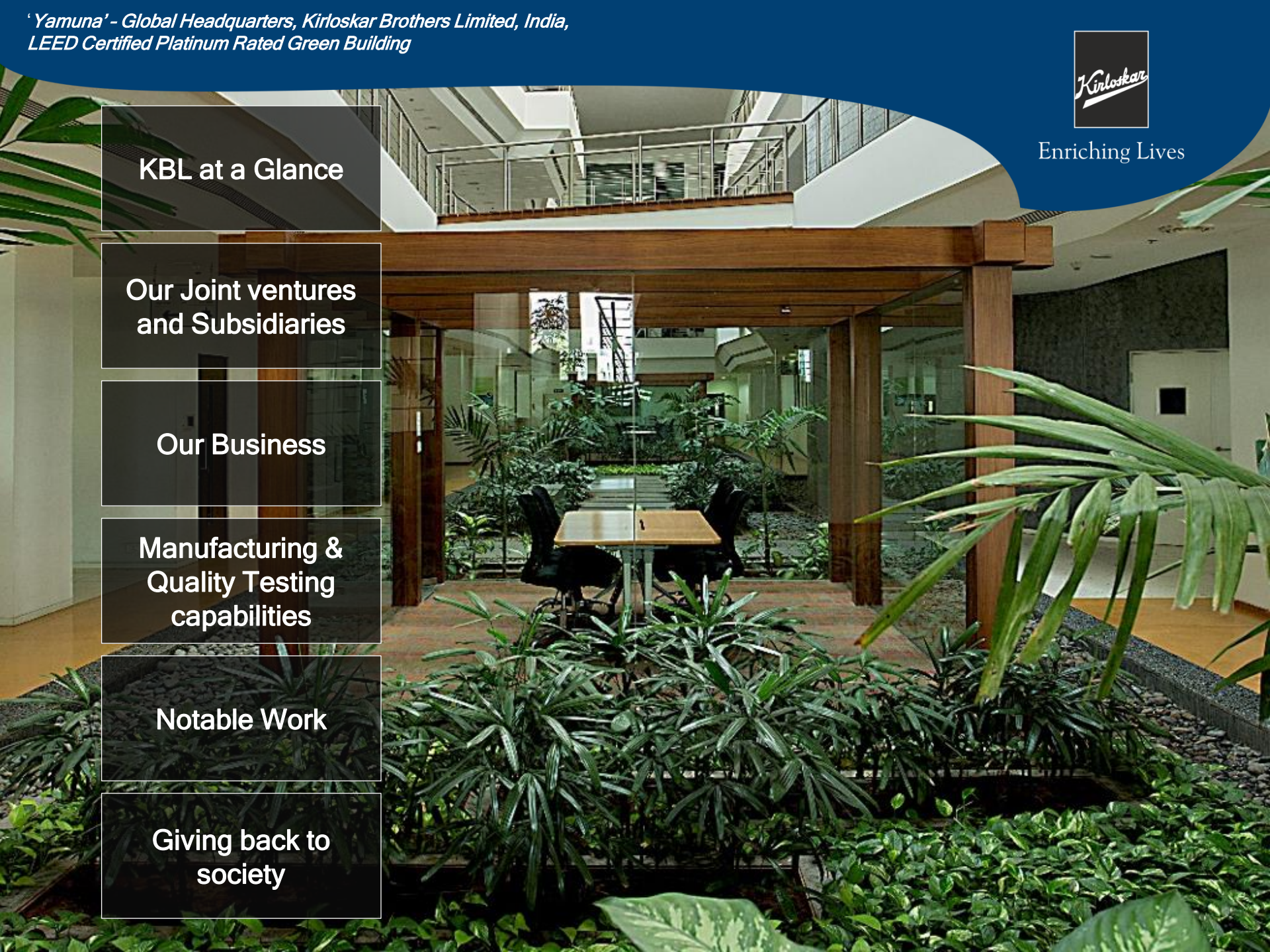
Our Joint ventures
and Subsidiaries

Our Business

Manufacturing &
Quality Testing
capabilities

Notable Work

Giving back to
society





Enriching Lives

KBL at a Glance

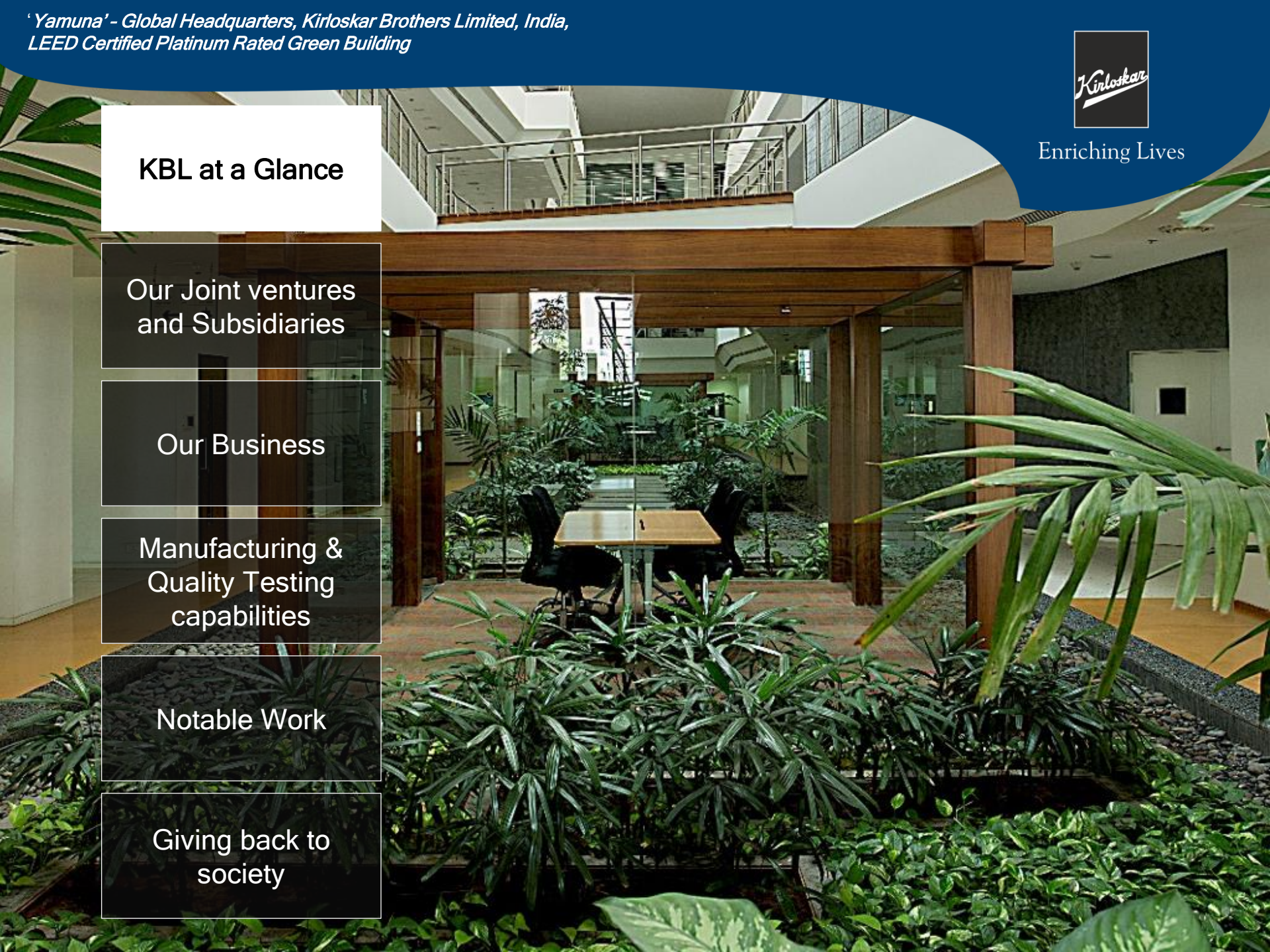
Our Joint ventures
and Subsidiaries

Our Business

Manufacturing &
Quality Testing
capabilities

Notable Work

Giving back to
society



Key Facts about KBL



Enriching Lives

Giving Employment to
6,000+ people

Manufacturing across
14 plants

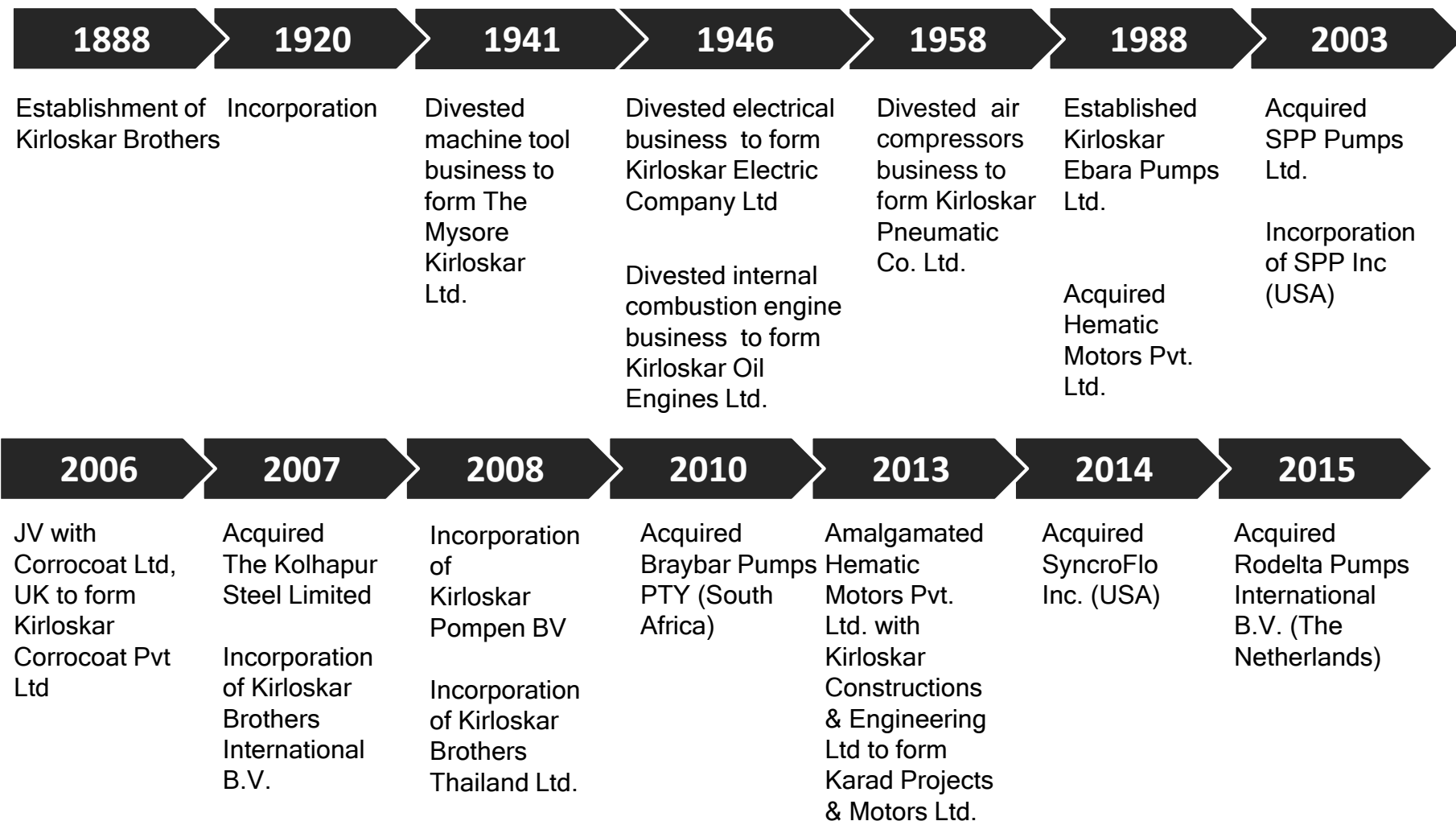
Serving the world for
135+ years

9th pump manufacturing
company to get N and NPT
certification from the
American Society of
Mechanical Engineers

Our Journey



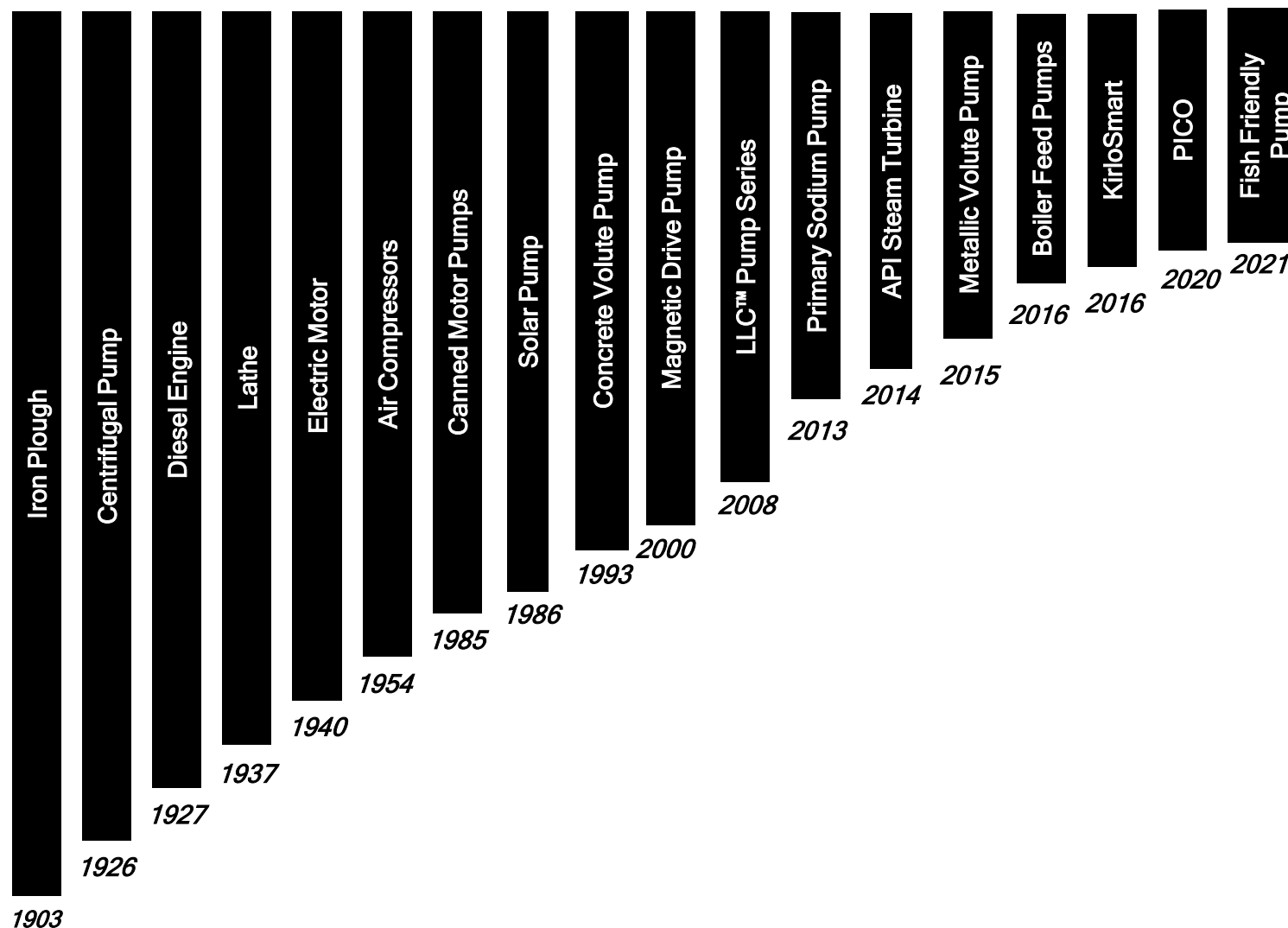
Enriching Lives

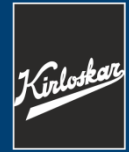


Giving India Its First



Enriching Lives





Enriching Lives

KBL at a Glance

**Our Joint ventures
and Subsidiaries**

Our Business

Manufacturing &
Quality Testing
capabilities

Notable Work &
Awards

Giving back to
society



Our Joint Ventures and Subsidiaries



Enriching Lives



SPP Pumps Limited,
United Kingdom

- Leading market presence in Fire Pump Packages business. Lowest life cycle cost pump range
- R&D, manufacturing and test facilities in UK



SyncroFlo Inc.,
The United States of America

- Leading American pump Packager
- Provides Booster and HVAC Packages



Rodelta Pumps
International B.V., The
Netherlands

- Leading manufacturer of API and Non-API pumps
- Specialization in O&G, Paper, Chemical and other fluid management applications



Kirloskar Brothers
(Thailand) Limited, Thailand

- Sales and packaging of centrifugal pumps for South East Asian markets

Kirloskar Brothers
Europe B.V., The Netherlands

- Sales and packaging of centrifugal pumps for European markets



Braybar Pumps Limited,
South Africa

- Manufacturing and sales of high head Multi-Stage pumps, Rubber lined slurry pumps and white metal lined bearings

Our Joint Ventures and Subsidiaries



Enriching Lives



Kirloskar Ebara Pumps Limited

- Centrifugal pumps as per API 610
- Multistage Boiler feed pumps
- Steam turbines and Turbo-gensets
- Hydraulic Power Recovery Turbine (HPRT)



Karad Project's And Motors Limited

- Motor manufacturing company with expertise in manufacturing of Stampings, Stators, Rotors, AC rotating machines, Aluminium Die-cast Connecting Rods and Pump assemblies.
- Also manufactures energy efficient motors for various applications .



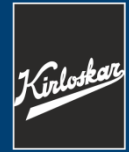
The Kolhapur Steel Limited

- Specializes in the manufacture of a wide variety of castings.
- The castings caters to demand for products like pumps, valves, turbines (steam and hydro), marine, rubber machinery, mining and general engineering.



Kirloskar Corrocoat Private Limited

- Energy efficiency coatings
- Sea water application
- Single point solution provider for applications in Infrastructure, Water, Power, and Oil & Gas



Enriching Lives

KBL at a Glance

Our Joint ventures
and Subsidiaries

**Our Business &
Global Footprint**

R&D, Manufacturing
& Quality
Assurance

Notable Work &
Awards

Giving back to
society

Our Business



Enriching Lives

*Large & Medium
pumping solutions*
for complex fluid
management system

Small pump
for day-to-day use at
households and farms.

Valves
for industrial and large-
scale applications

*Hydel
turbines*



Oil & Gas



Marine &
Defence



Building &
Construction



Water
Resource
Management



Power



Irrigation &
Agriculture



Industrial



Customer
Service & Spares



Small Pumps
Business

Our Product Line

*Over 75 types
of Pumps*

*Pumps up to
22 MW*

*Lowest Life-cycle Cost (LLC™)
pump series*

*Flow up to
120,000 m³/hr*

*Head up to
3200 m*

*28 Types of
Valves*

*Valve diameter
50mm to 5m*

*Low Tension
Induction
Motors*

*Pico and Mini
Hydel Turbines
(3 KW - 10 MW)*

EPC Capabilities





Enriching Lives

Global Footprint Through Local Presence



Corporate Office and Global Headquarters

1. Pune, India



Overseas Presence

2. Atlanta, US
3. Coleford, UK
4. Almelo, The Netherlands
5. Johannesburg, South Africa
6. Jebel Ali, UAE
7. Cairo, Egypt
8. Bangkok, Thailand



Manufacturing Plants

9. Kirloskarvadi, India
10. Shirwal, India
11. Sanand, India
12. Kaniyur, India
13. Dewas, India



Domestic Subsidiaries and Associate companies

14. Karad Projects and Motors Limited, Karad
15. The Kolhapur Steel Limited, Kolhapur
16. Kirloskar Corrocoat Private Limited, Kirloskarvadi
17. Kirloskar Ebara Pumps Limited, Kirloskarvadi

At KBL, identity of women workers matters



Enriching Lives



100% women operated manufacturing plant at Kaniyur

Our Innovative Solutions



Enriching Lives



Solar
Pumping System



Pump Selection
Package



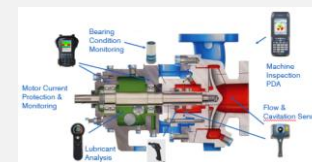
Fire Pump
Monitoring



Lowest Life-cycle Cost (LLC)™
Pump Series



Primary Heat Pumps for Nuclear
Power Plant



Remote Monitoring System -
KirloSmart®



Augmented Reality Mobile
Training Guide



Canned Motor
Pump



Digital Sizing
Guide

Association with Governments

Angola



Cambodia



Egypt



Ghana



Jamaica



Laos



Lesotho



Senegal



Sri Lanka



Sudan



Vietnam



Zimbabwe



Our Global Partnerships



Enriching Lives

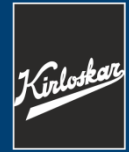


Few of our Global Customers



Enriching Lives





Enriching Lives

KBL at a Glance

Our Joint ventures
and Subsidiaries

Our Business

**R&D,
Manufacturing &
Quality Assurance**

Notable Work

Giving back to
society



End-to-end Capability



Enriching Lives

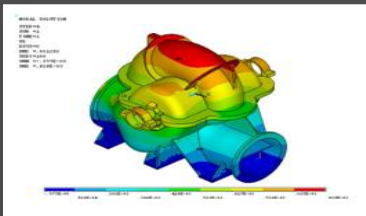
Conceptualization



Concept Design



Engineering Design



Performance Analysis

Manufacturing



Manufacturing

Implementation



Quality Check



Installation & Commissioning



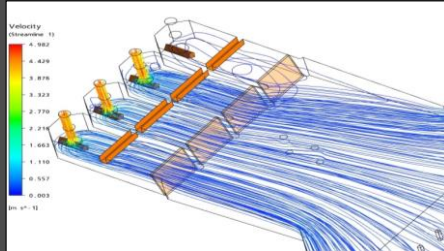
Authorized Service Centre

Our R&D capability

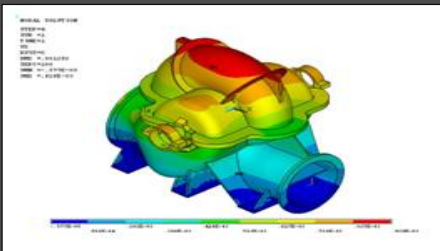


Enriching Lives

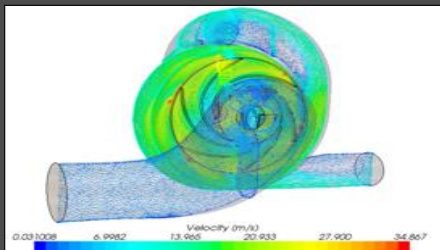
Sump CFD Study



Seismic analysis



CFD analysis



- High performance and new product development
- Experimental Sump model studies
- Sump model studies using computational fluid dynamic (CFD) techniques
- Surge, Structural, Cavitation test, and Transient analysis



**6 US
patents
filled &
approved**

Approved Patents

‘Arrangements for pumping fluids from sumps’ is published in US.

Benefit in terms of efforts

Helps in elimination of air entrainment and reduction of minimum submergence.

Benefit in terms of monetary value

Saves in the cost of excavation of the pit as well as in the concrete lining.

Our Manufacturing Capability



Enriching Lives



Fully automatic twin spindle, twin turret machine



Horizontal machining centre



Pattern manufacturing machine

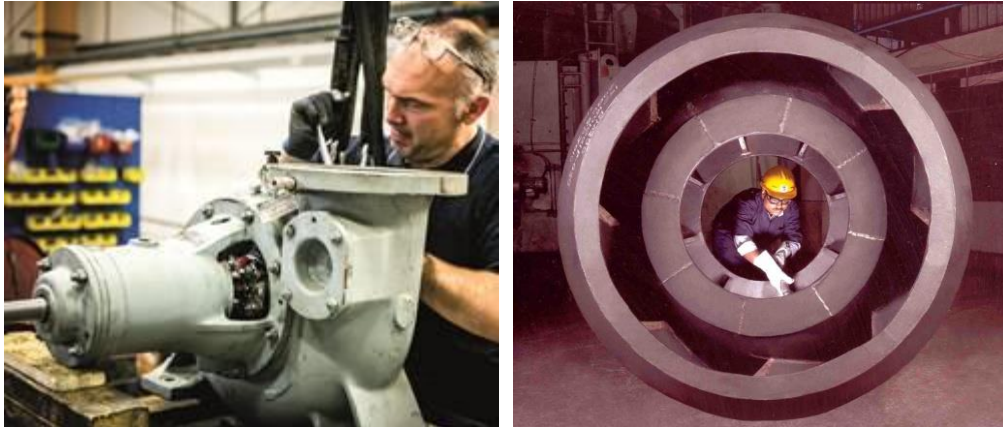


4 Axis machine

Foundry Capability



Enriching Lives



- 3D Printing facility
- Monthly production capacity = 1,400 tons
- Capability to produce a single casting weighing up to 8,000 kg
- Casting capability of **special alloy steels** to international standards
- Equipped with a centralized pattern shop, mechanized sand processing system, automatic molding machines and metal pouring system.
- Independent units for **cast iron, alloy steel** and **non-ferrous metals**.

Testing and Quality Control Capability



Enriching Lives

Quality Control



FARO arm

Material Testing and Metrology

- Universal Testing Machine
- Fatigue Testing Machine
- Hardness Tester
- Portable co-ordinate measurement
- 3D scanning
- Spectrometer (computerized)
- Surface Finish Measuring Instruments

Non Destructive Testing Laboratory

- Radiography
- Ultrasonic Testing
- Magnetic Particle Testing
- Helium Leak testing
- Liquid Penetrant Testing

Testing



Hydraulic Research Centre

- Closed circuit NPSH testing capabilities
- Computerized data acquisition system
- Pump testing at duty conditions up to 5000 kW motor and discharge up to 50,000 m³/hr.
- Physical Sump and Pump model study
- Built as per British Hydraulic Research Association
- Testing at 50 Hz and 60 Hz frequency covering all global supply voltages (3.3 to 13.2 kV)

Advanced Technology Product Division (ATPD)



Enriching Lives

ATPD is a new manufacturing division at the company's mother plant in Kirloskarvadi, for high-end technology products, especially for nuclear applications. It has a state-of-the-art facility spread across a 6000 sq. m area and is fully equipped with modern machines and testing facilities, including special measuring instruments.



World's largest 3D printer in the manufacturing process



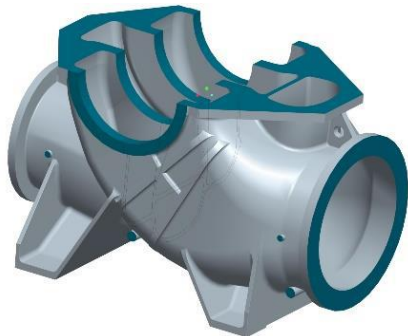
Enriching Lives



Only pump company in India to use 3D printer for pump casting

Advantages -

- Reduce defect
- Improve quality of product
- Reduce process cycle (manufacturing) time
- Help in design products with better efficiency
- Help prove new development concepts and help to bring innovation quickly to the market.
- Saving of material and man hours



KBL has been able to achieve an **average casting weight reduction of 15%** over the conventional process and **cycle time reduction of 78 Hours** for 12 Ton core-mould weight.

Augmented Reality in customer service



Enriching Lives

Augmented reality plays an integral role in our business operations as it helps us integrate and manage all our service knowledge on one platform thus enabling quicker problem resolutions through diagnostics based on the cumulative experience of the service engineers around the world.



Our International Testing Facility



Enriching Lives



Certifications and Approvals



Enriching Lives

- First Indian Pump Manufacturing Company to Receive Integrated Management System Certificate (ISO 9001:2015, ISO 14001:2015, ISO 45001:2018, ISO 50001:2018)
- CE
- ATEX
- FM approved/UL Listed fire fighting packages
- India Design mark for various products



Certification and approvals - For manufacturing plants



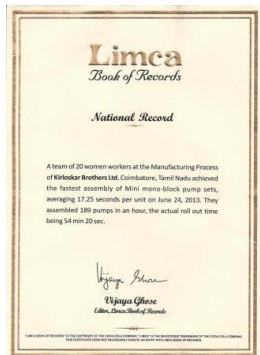
Enriching Lives



**Kirloskarvadi & Dewas – Both Facilities are Greenco Gold certified
Kaniyur and Sanand - Both pump manufacturing plants to receive Bronze certification**



KBL – Small Pump Business received the coveted CII-EXIM Bank commendation for 'Significant Achievement on the journey towards Business Excellence'.



A team of 20 women workers at the Manufacturing process achieved the fastest assembly of Mini mono-block pump sets, averaging 17.25 seconds per unit on June 24, 2013. Assembled 189 pumps in an hour, the actual roll out time being 54 min 20 sec.

Customer Service and Support



Enriching Lives

Centers / Service Point

No.

Authorized Refurbishment Centers

4

Global service contact points

36

Authorized Service and Spares Dealers

126

Authorized Service Centers

600+

- Reduction in lead time through Smart planning at works
- Reduction in order creation time and empowerment of sales force through CRM 7.1 - Service Max TM



*Kirloskar Authorised
Refurbishment Centre,
Jamshedpur*



*SPP MENA Service Centre,
Egypt*

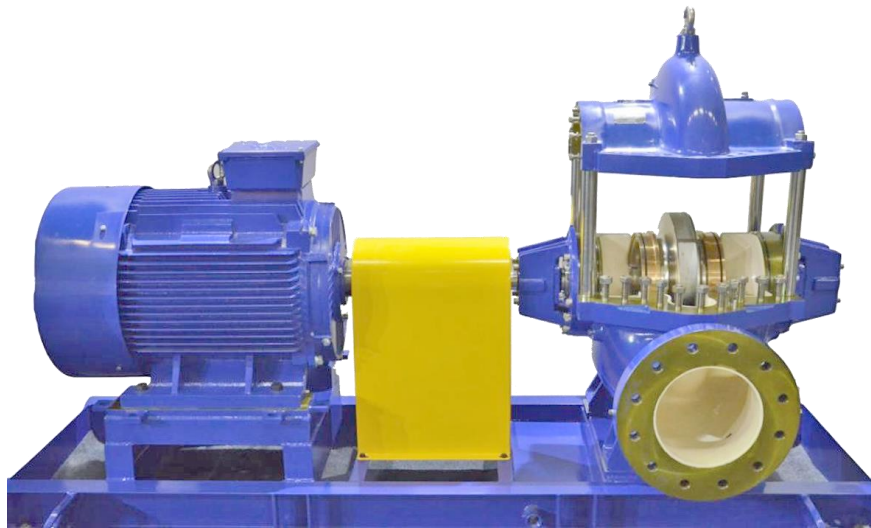
Lowest Life-cycle Cost Pump Series



Enriching Lives

Kirloskar Brothers Ltd. was the first company in the world to design Lowest Lifecycle Cost (LLC™) Pumps based on the recommendations of Hydraulic Institute and Euro Pump.

Lowest Lifecycle Cost (LLC™) Pump series focuses on the energy consumption and maintenance cost of the pumps. It is beneficial to evaluate the life cycle cost of a pump to compare the available pumping system while making buying decisions.



More than 1000 installations across the globe

United Kingdom -

- Black and Veatch Limited
- Bristol Water PLC
- DWR Cymru Welsh Water
- EDF Energy
- Portsmouth Water
- Scottish Power
- United Utilities
- South East Water
- Thames Water Utilities Limited

Australia -

- Weir Minerals

Norway -

- Cardo Flow Solutions

Mexico -

- Gammon Lakes

South Africa -

- Rand Water

India -

- Century Rayon, Shahad
- National Peroxide Limited
- Delhi Jal Nigam, Delhi
- JSW Steel
- Tata Steel
- And many more....

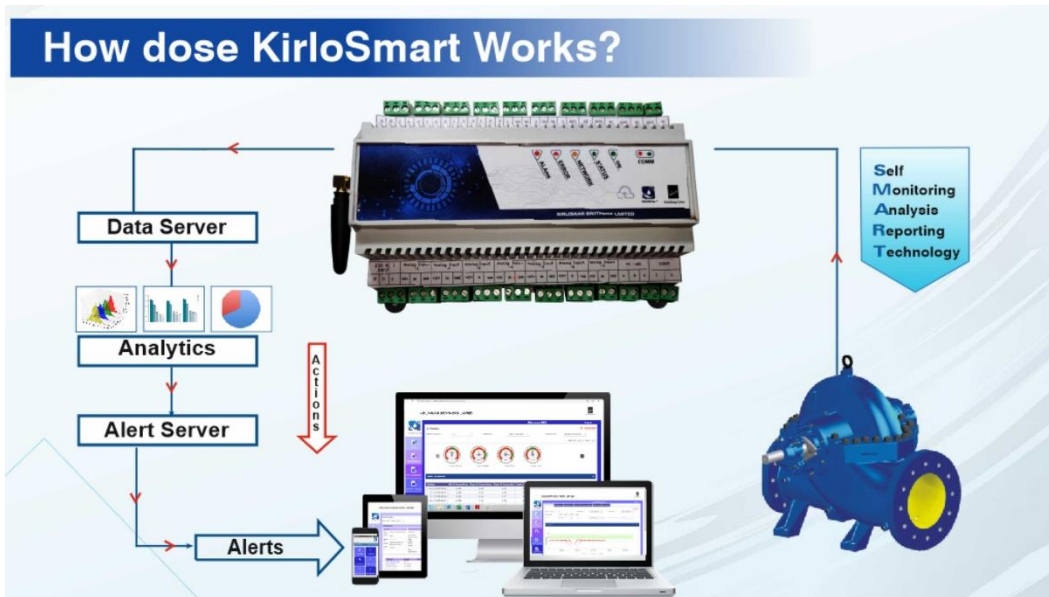
India's First IoT Remote Pump Monitoring System



Enriching Lives

Kirloskar Remote Monitoring System (KirloSmart™) is an intelligent remote monitoring solution which helps a person to view process parameters through the internet.

KirloSmart captures data from pressure transmitters, flow meters, vibration sensors, bearing RTD and energy meters. KirloSmart can monitor parameters like flow, pressure, vibration, bearing temperature, voltage, current, energy consumption, etc.

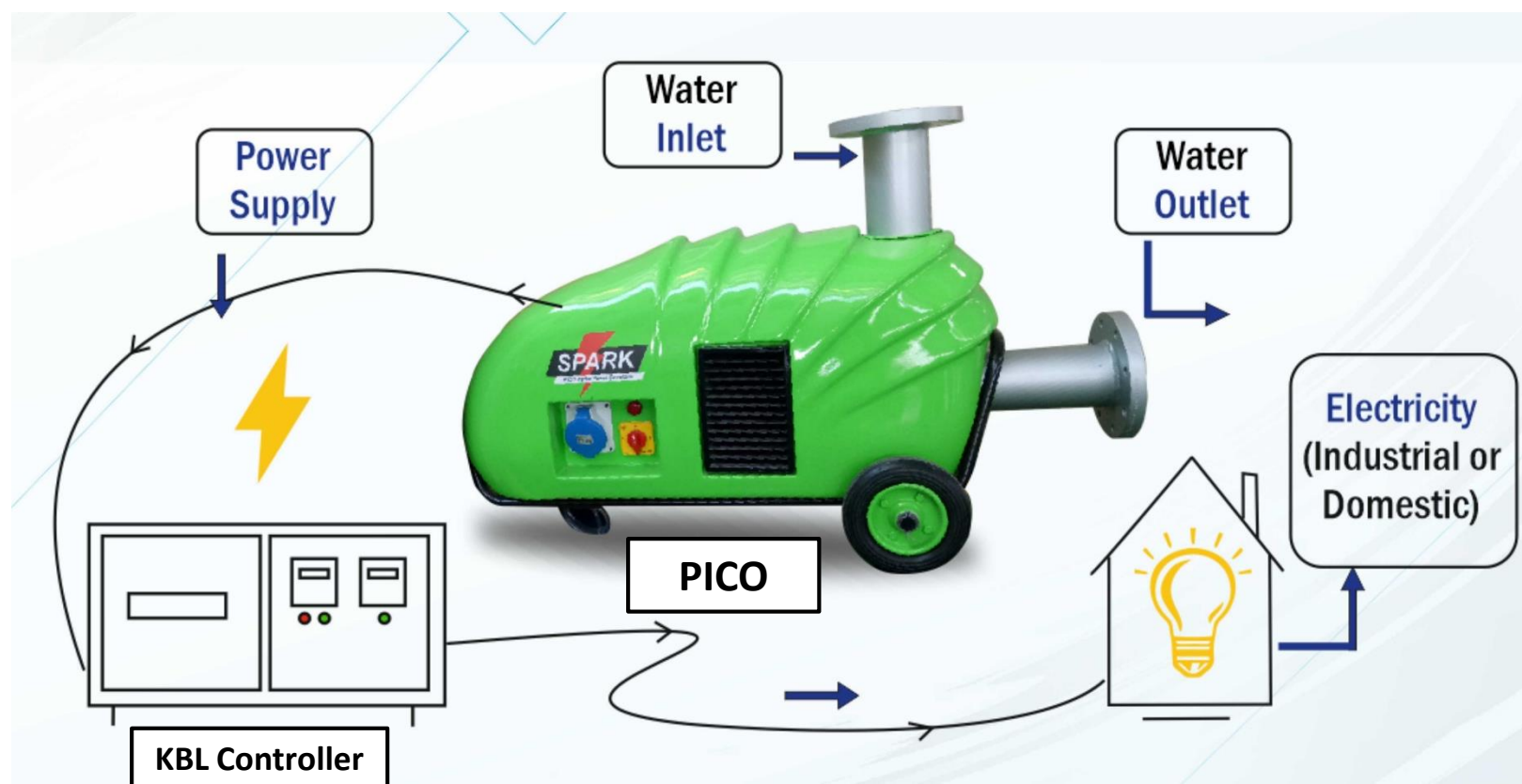


India's First PICO Set



Enriching Lives

PICO (micro hydro power generator) is generally used for meeting smaller energy (up to 5 kW) requirements while Pumps as Turbines (PAT) can be used for meeting comparatively higher energy (up to 300 kW) requirements.



Fish Friendly Pump



Enriching Lives

KBL has introduced one of the world's first fish-friendly pumps. Our team was involved in the creation of the NEN 8775 fish safety standard that defines the method for determining the fish safety of pumps, Archimedes' screws and enclosed water turbines.

Among other things, this NEN 8775 standard provides a calculation method for calculating the survival rate of fish that pass through pumps, Archimedes' screws or enclosed water turbines.





Enriching Lives

KBL at a Glance

Our Joint ventures
and Subsidiaries

Our Business

R&D, Manufacturing
& Quality
Assurance

Notable Work

Giving back to
society



Pelubang Water Supply Scheme, Malaysia

KBL supplied 8 Nos Horizontal Split Case Pumps (Bottom Suction, Side Delivery)

Head: 98m

Flow: 570.6 m³/hr

RPM: 993 rpm

Motor Rating: 988 HP



Water Resource Management (Cont...)



Enriching Lives



Hunter Water
Corporation,
South Wales,
Australia

KBL supplied
2 Vertical Turbine
Pumps (BHQ70),
Motor 872 HP

Building & Constructions



Enriching Lives



Mumbai International Airport - T2 Terminal

KBL supplied 27 pumps for the maintaining systems at the Airport.

Maximum flow : 1703 m³/hr

Maximum head : 27.5 meters

Maximum Speed : 2900 RPM

Building & Constructions (Cont...)



Enriching Lives



Gujarat International Finance Tec-City (GIFT)

Presently under construction to cater to India's large financial services potential by giving global MNCs a world-class infrastructure and facilities.

KBL supplied 12 pumps for its district cooling systems.

Maximum flow: 3407 m³/hr
Maximum head : 90 meters
Maximum Speed : 1492 RPM

Irrigation



Enriching Lives



**Sardar Sarovar Narmada Nigam Ltd.
(SSNNL)**

KBL's concrete volute pumps and vertical turbine pumps support the world's largest pumping system.

Liquid : Water
Flow : 72,000 m³/hr.
Head : 16.3 MWC
Speed: 200 RPM
Motor : 6035 HP

Helping Bring a Global Green Revolution



Enriching Lives



Laos



Cambodia



Cambodia



Egypt

After supporting the Green Revolution in India, our pumps made Senegal & Laos self sufficient in food and facilitated the transformation of the arid desert belt across the river Nile in Egypt into a lush green farmland. Kirloskar pumps are operational in one of the world's largest pumping schemes, Sardar Sarovar Narmada Nigam Limited, irrigating 540,000 hectares of land and providing drinking water to over 30 million people.

“ A Pump is called Kirloskar in Egypt”

Pumps for Nuclear Power



Enriching Lives



Primary & Secondary
Sodium Pump,
Bhavini

We are the first and leading manufacturers of critical pumps in India. We have supplied primary and secondary sodium pump to Bhavini and specialised pump sets for the ITER (International Thermonuclear Experimental Reactor) project in France, the world's largest magnetic confinement plasma physics experiment. Our pumps made India self sufficient in production of heavy water.

Association with Some of the Most Iconic Global Buildings



Enriching Lives

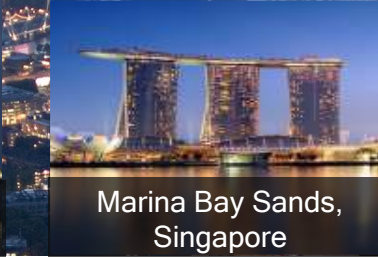
The Shard, UK



White House,
Washington



Hong Kong-Zhuhai-
Macau Bridge



Marina Bay Sands,
Singapore



Petronas Towers,
Kuala Lumpur



ICONSIAM,
Bangkok

KBL's pumping solutions are operational in many of the world's iconic buildings

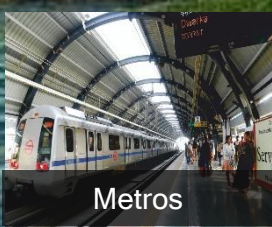
Association with Some of the Most Iconic Projects in India



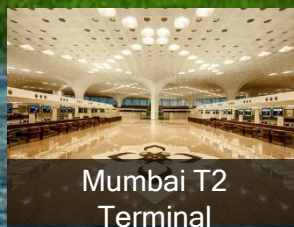
Enriching Lives



ISRO



Metros



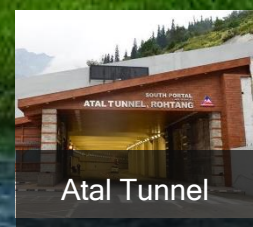
Mumbai T2
Terminal



Delhi Jal Board



ONGC, Mumbai



Atal Tunnel

KBL's pumping solutions are in operation in many of India's iconic projects like Sardar Sarovar Narmada Nigam Ltd, Statue of Unity, Atal Tunnel, Kartarpur corridor, PSUs, Metro trains, Airports, major municipal corporations, leading power plants, etc.

Pump trusted by millions, everyday.



Enriching Lives

Our wide range of agricultural and domestic pumps cater to the daily needs of millions of people across the globe by irrigating their farmlands and ensuring an uninterrupted water supply in their households.





Bharat Petroleum Corporation Limited, Mahul-Mumbai
1st pump of KEPL supplied in 1989, which is still running satisfactorily.

Model : UCW 350 X 200
Liquid : Naphta
Flow : 1000 m³/hr.
Head : 115 m

Speed : 1490 rpm
Temp : 70°C
Motor : 469 HP



Reliance Industries Limited, Hazira-Gujarat.
KBL pumps used for Fench water application

Model : BB1 (KBAD)
Liquid : Water and hydrocarbon
Flow : 1300 m³/hr.
Head : 137

Speed : 1470 rpm
Temp : 90°C
Motor : 1342 HP



Saudi Aramco Base Oil Company (Luberef)- Saudi Arabia

Model : BB5 150 X 100 (A) DCD
Flow : 1300 m³/hr. to 1800 m³/hr.
Head : 1603.9 m

Speed : 4483 rpm
Capacity : 92 m³/ hr.
Motor : 900 kW



Indian Farmers Fertiliser Cooperative Limited, Kalol- Gujarat

KBL supplied Unit + HPRT + Clutch + Driven Pump + Motor
Model : 400 X 300 SPD 2 GT

DRIVEN PUMP	
Head	203 m
Capacity	1399 m ³ /hr.
Speed	1700 rpm
BKW	1471 kW
Temp.	73°C

HPRT	
Capacity	1636 m ³ /hr.
Pressure	30 kg / cm ²
Power Generated	1080 HP

Valves



Enriching Lives



**KBL's valves supports
Massachusetts Water
Resources Authority,
Boston, USA**

Size of valves = 2.1 m
Type of valves = Butterfly
Valves



**KBL's valves supports
TNEB. India Project :
Periyar Vaigai Project**

Size of valves = 3.0 m
Type of valves = Turbine
Inlet



**KBL's valves supports
industrial projects like
Jaypee Nigrie TPP**

Size of valves = 3.8 m
Type of valves = Butterfly



Sonshi Mines

- Design, manufacture and supply of Pontoon mounted, Autoprime Pumping system with Automation for pit dewatering

Head	450 m ³ /hr.
Capacity	160 m
Motor	422 HP

- The pump solution included complete electric system, instruments for recording discharge, flow, pressure, power record, safety system, protection devices, alarms, stoppage under dry running, over loading, etc.
- It also included GSM based alarm system.

EPC For Sea Water Pumping
System Of CCWS, Sohar,
Oman

Liquid : Sea Water

Pump Type : Vertical mixed flow

Qty : 3 Sets

Design Capacity : 15,000 m³/hr

Total Head : 35 m

Speed : 490 rpm

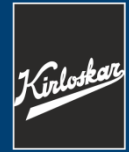
Motor Rating : 2548 HP





Indian Warship INS VIRAT

- Presence in projects of national interest like nuclear submarines and Indian naval warships
- Kirloskar systems installed in Shipyards and dry docks such as MDL, GRSE, Pipavav
- Unique solutions:
 - Water Mist Firefighting system
 - Axial flow pumps and Containerized pumps
 - Jet propulsion pumps for the coast guard
 - High head pumps



Enriching Lives

KBL at a Glance

Our Joint ventures
and Subsidiaries

Our Business

R&D, Manufacturing
& Quality
Assurance

Notable Work

Giving back to
society

Corporate Social Responsibility



Enriching Lives

KBL conducts an array of activities and campaigns throughout the year. Primarily, the company focuses on three areas for its CSR contributions: **Education, Healthcare, and Environment**, through the Vikas Charitable trust and Sou. Radhabai Trust.



Kirloskar High School



Hospital



Kerala Flood Relief Operation



WaSH Program



Skill Training Program



Flood relief operation, Sangli

CSR activities in India



Enriching Lives

Supporting creation of clean water source for underprivileged school kids

Self-employment awareness campaign amongst unemployed youths

Health-check, eye-check camps and Vaccination camps

Provision & Up-gradation of education facilities for underprivileged school kids

Tree Plantation

Save girl-child campaigns and Sponsoring foods for orphaned kids

Donating first aid boxes and water pumps to schools of underprivileged school kids

Awareness campaign for young farmers relating cultivating and cattle breeding best practices.

Recognitions to KBL's dedication for society



Enriching Lives



Overall excellence Award – Amity CSR Conclave 2012



KBL Dewas won the Award of “The Best Corporate Social Responsibility Practices” Organized by World CSR Congress, Mumbai.
Almost 500+ companies from 30 countries had participated.

World CSR Congress recognizes KBL as India's Most Ethical Company



Enriching Lives



KBL bags 'India's Most Ethical Company' award by World CSR Congress



THE FINANCIAL EXPRESS

Kirloskar Bros gets award for ethical manufacturing

Kirloskar Brothers (KBL), a global fluid management company, has been honoured with the World CSR Congress 2014 award under the category 'India's Most Ethical Company in Industrial Manufacturing'. The

Sakal Times

KBL bags 'Most Ethical' firm award

International CSR Activities



Enriching Lives

- Listed in England's top 100 apprenticeship employers by City & Guilds and the National Apprenticeship service
- Work with the Hero's First Foundation in the USA to raise money for war veterans of the Iraq and Afghanistan campaigns which is donated to hospitals and skill building institutions
- Sponsor skill building programs in the Republic of South Africa
- 2% of average net profit for preceding 3 financial years are invested in CSR activities

SPP Pumps has been recognized as one of United Kingdom's best Apprenticeship Employers in the regional final of the National Apprenticeship Awards 2013



DEPUTY PRIME MINISTER
70 WHITEHALL, LONDON SW1A 2AS

7th October 2013

From the Deputy Prime Minister

Dear Gary Hurcombe, SPP Pumps Limited

National Apprenticeship Awards and the City & Guilds Top 100 Apprenticeship Employers

Every year, City & Guilds and the National Apprenticeship Service publish the official list of England's Top 100 Apprenticeship Employers 2013. I am delighted to inform you that, in recognition of your impressive work with Apprentices, your company will be included in the 2013 list.

In addition, I would also like to take this chance to congratulate you on your success at this year's National Apprenticeship Awards.

Apprenticeships are at the heart of our drive for a stronger economy: equipping people of all ages with the skills employers need to help their businesses prosper and compete in a global market.

As we work to increase the opportunities for hard-working young people to achieve their ambitions through high-quality apprenticeship training, it is vitally important that we celebrate the achievements of employers like you, who go the extra mile to help their apprentices succeed.

We want more organisations to know the very real benefits of hiring an apprentice. Every week, the average fully trained apprentice boosts business productivity by £214. Employers who hire apprentices are not only securing their own company's future prosperity, but also making an invaluable contribution to our economy, their local communities and the lives and careers of individuals across the country.

The Top 100 will be officially announced at the National Apprenticeship Awards ceremony at the NEC Birmingham on 14 November. And I hope that you can attend this prestigious awards evening and The Skills Show, which will be taking place alongside it.

Congratulations again on your awards and thank you for your continued commitment to helping apprentices succeed.

Best wishes

NICK CLEGG

CSR Activities undertaken by SPP Pumps during Covid-19 Pandemic



Enriching Lives

- Great Oaks Hospice, is situated close to SPP main manufacturing centre at Coleford, and like so many of hospices nationwide, are unable to take day patients due to the current situation. Instead they are doing home visits, whilst these home visits take place, SPP provides each patient with a special food package.



- SPP work closely with several volunteering programmes and charities. Working along with The Forest Foodbank, part of the UK wide Trussell Trust, SPP distributed between two and three tonnes of food each month to local families to provide a lifeline to people who live in the area around SPP Coleford manufacturing facility.



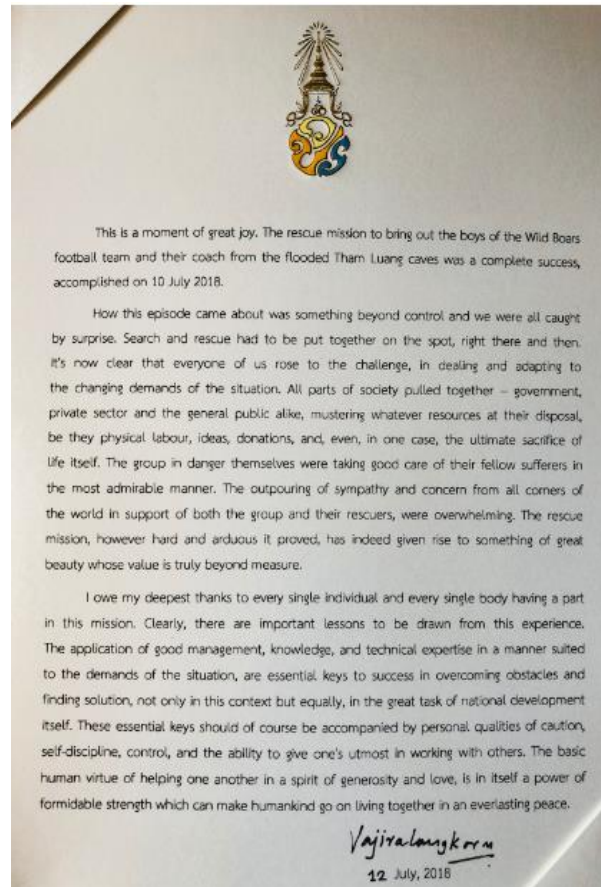
- SPP donated laptops to students of Coalway Junior School, located near main manufacturing plant, to ensure they have access to suitable devices to continue learning from home during the lockdown.



Thai Cave Rescue



Enriching Lives



During Thai cave rescue, KBL sent our multi-national team of experts comprising of members from KBL (India), KBTL (Thailand) and SPP Pumps (UK), who were present on-site at the Mae Sai cave to offer their technical expertise during the rescue operation to support the Thai government and fly the Indian flag



Enriching Lives



Thank You

KIRLOSKAR BROTHERS LIMITED

Established 1888

A Kirloskar Group Company

Registered Office & Global Headquarters: "Yamuna", Survey No. 98/(3to7), Baner, Pune 411045, Maharashtra, India.

Phone: +91 20 2721 4444 | Email: marketing@kbl.co.in | Website: www.kirloskarpumps.com

OUR COMPANIES

